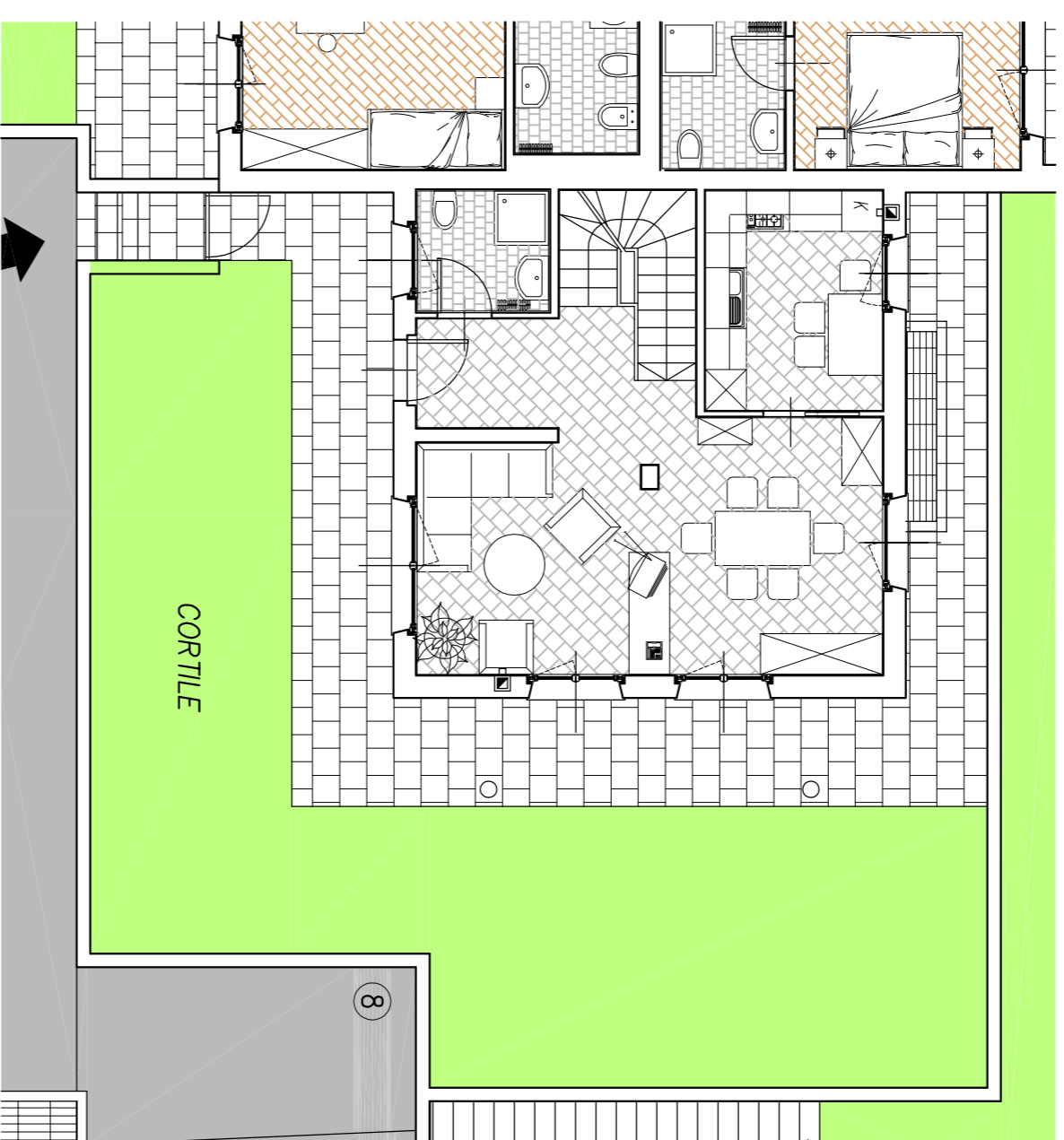
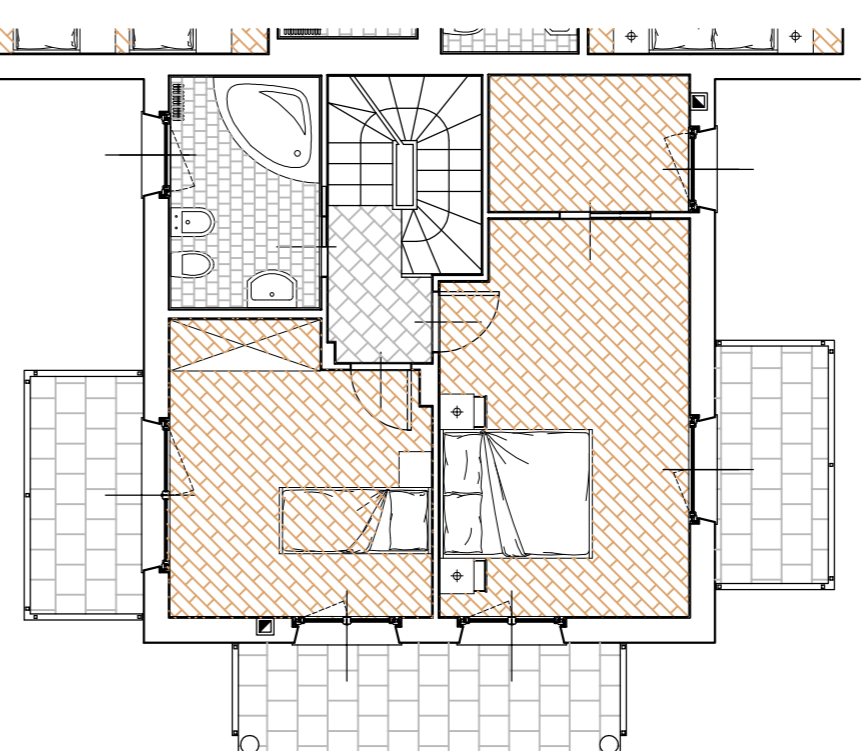


App.to 25 corpo C

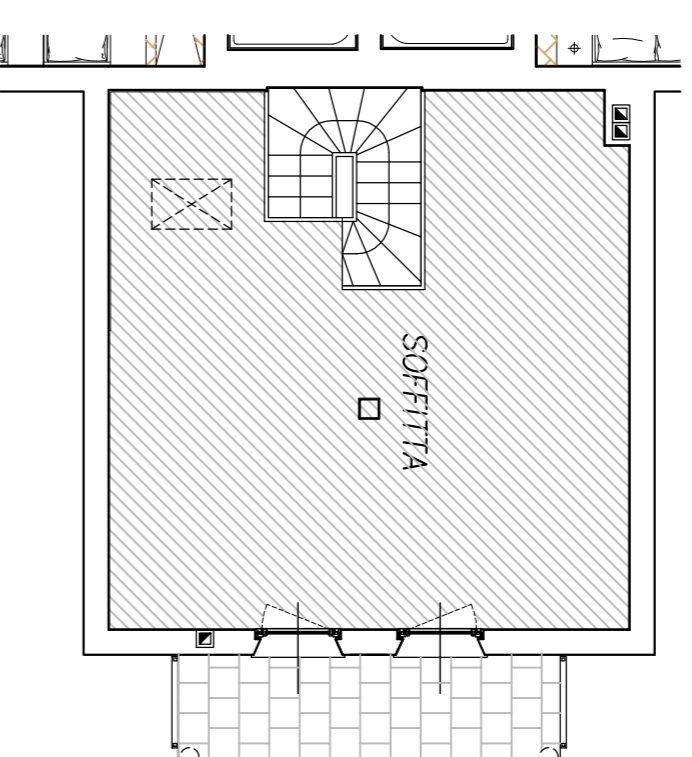
Piano Terra



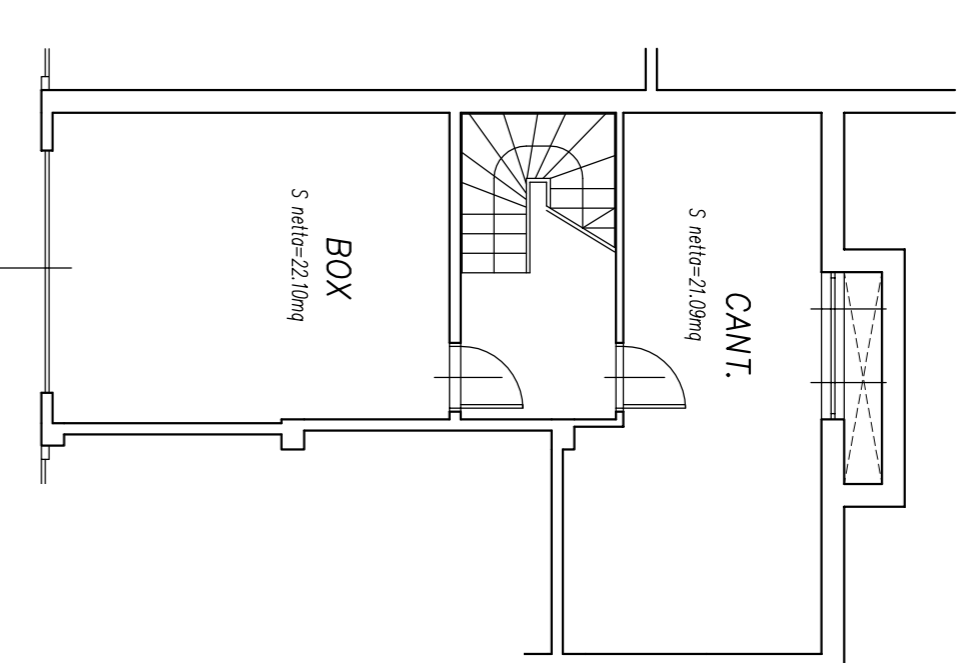
Primo Piano



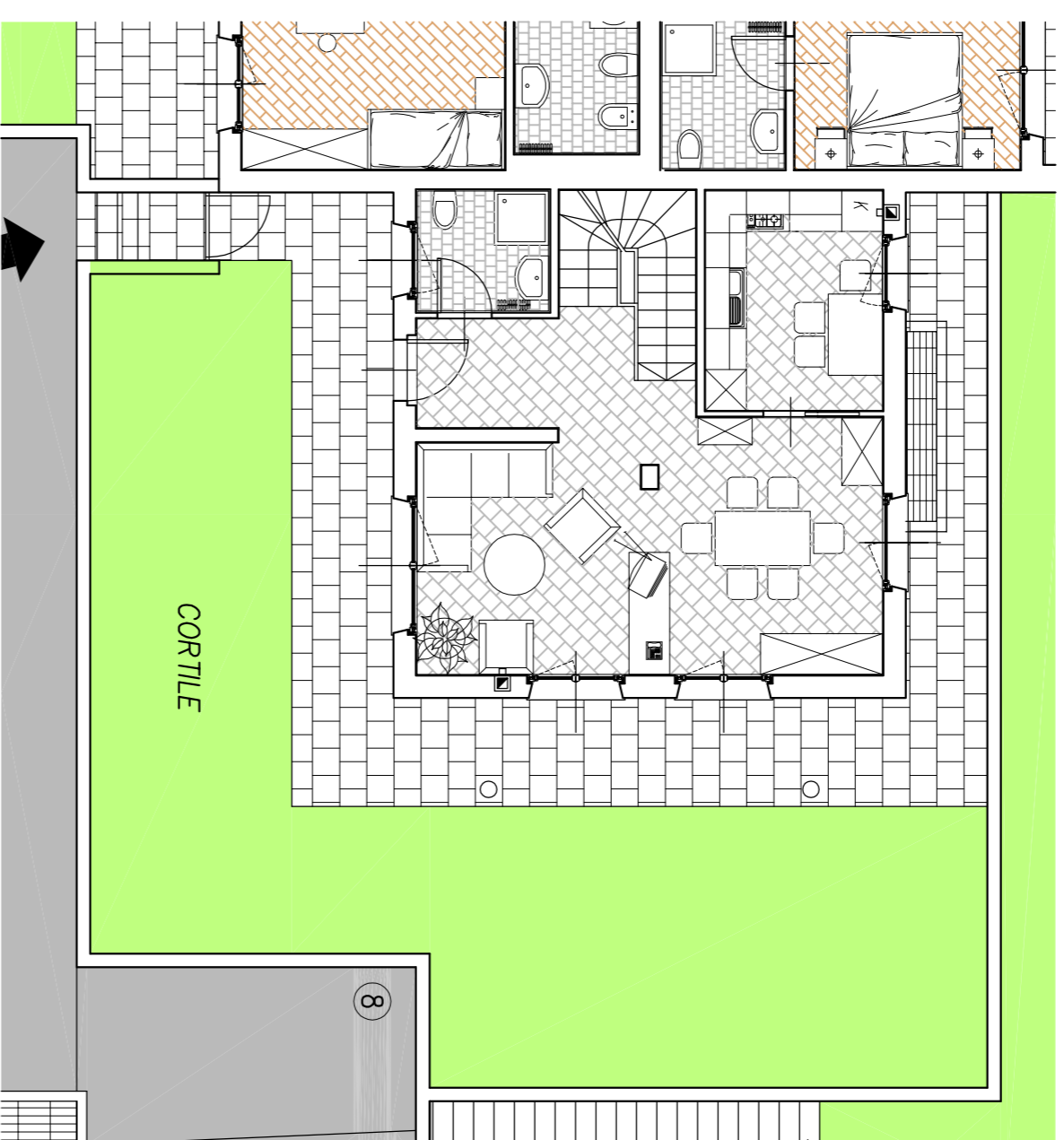
Secondo piano (soffitta)



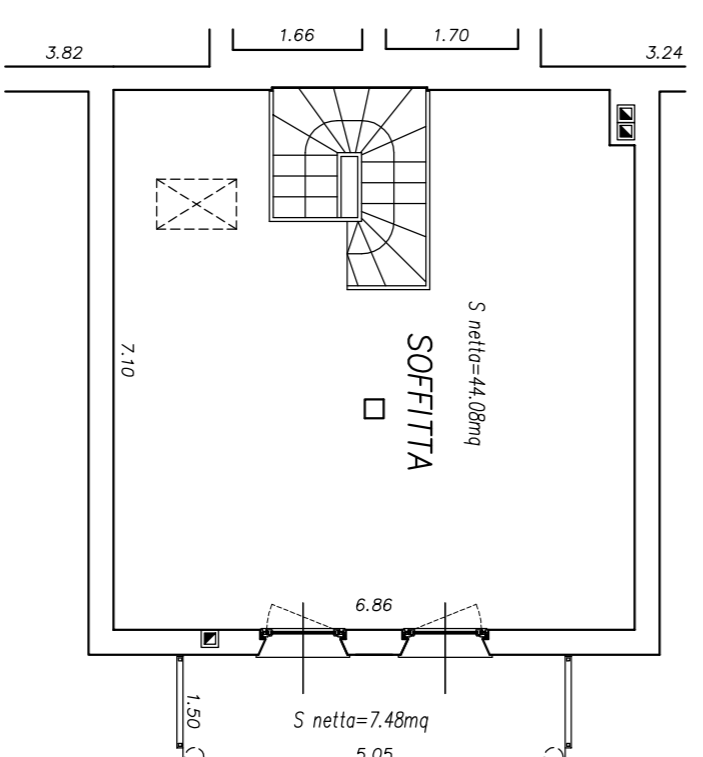
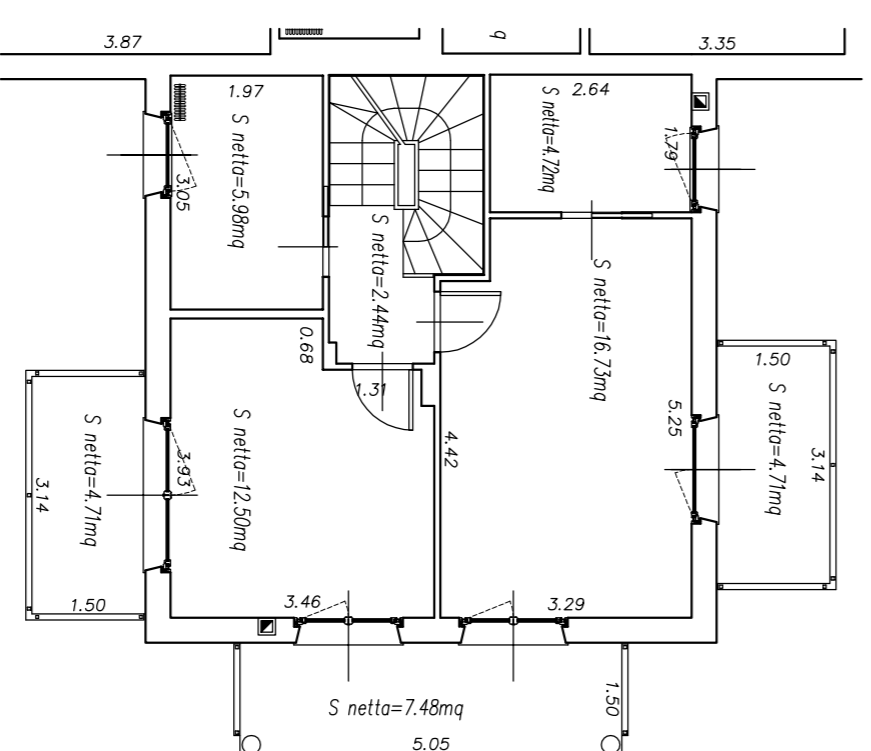
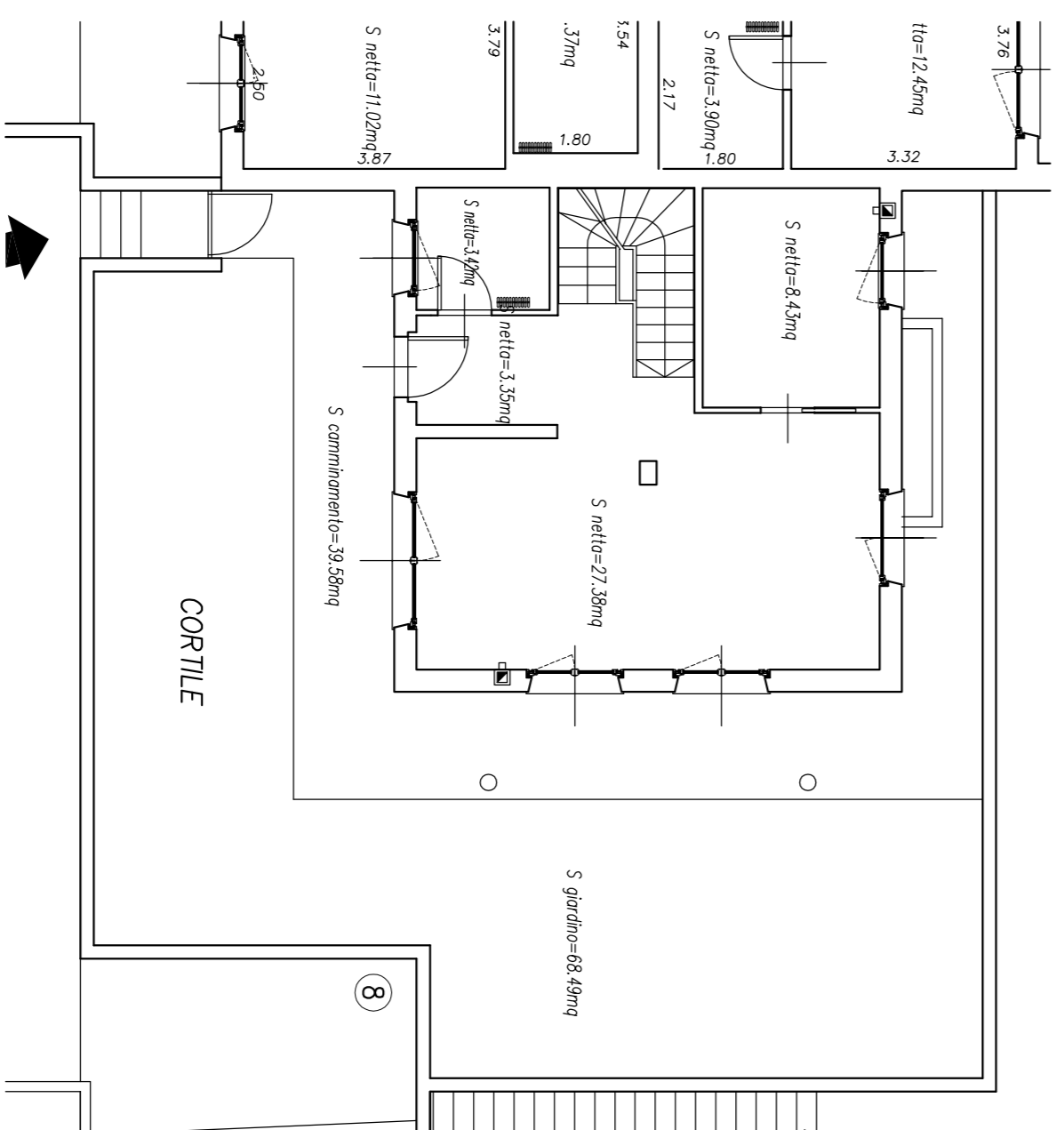
Cantina e garage Piano interrato



Piante arredate



Superfici calpestabili



Le misure sono da ritenersi indicative. Possono variare in fase di realizzazione di tramezza, colonne di scarico e ventilazione, impianti tecnologici e altre motivazioni di carattere tecnico.

RESIDENZA TRE CASTAGNI Pergine - Via Marconi

certificata Casaclima "A"

App.to 25 - corpo C

31 gennaio 2012



SCALA 1:100



C O S M O

COS.MO. COSTRUZIONI S.P.A.
Via Dante Alighieri, 12 - 05012 Pergine
Tel. 0578 600201 - Fax 0578 633241
e-mail: info@cosmoconstruzioni.it

visita il nostro sito
www.cosmocostruzioni.it