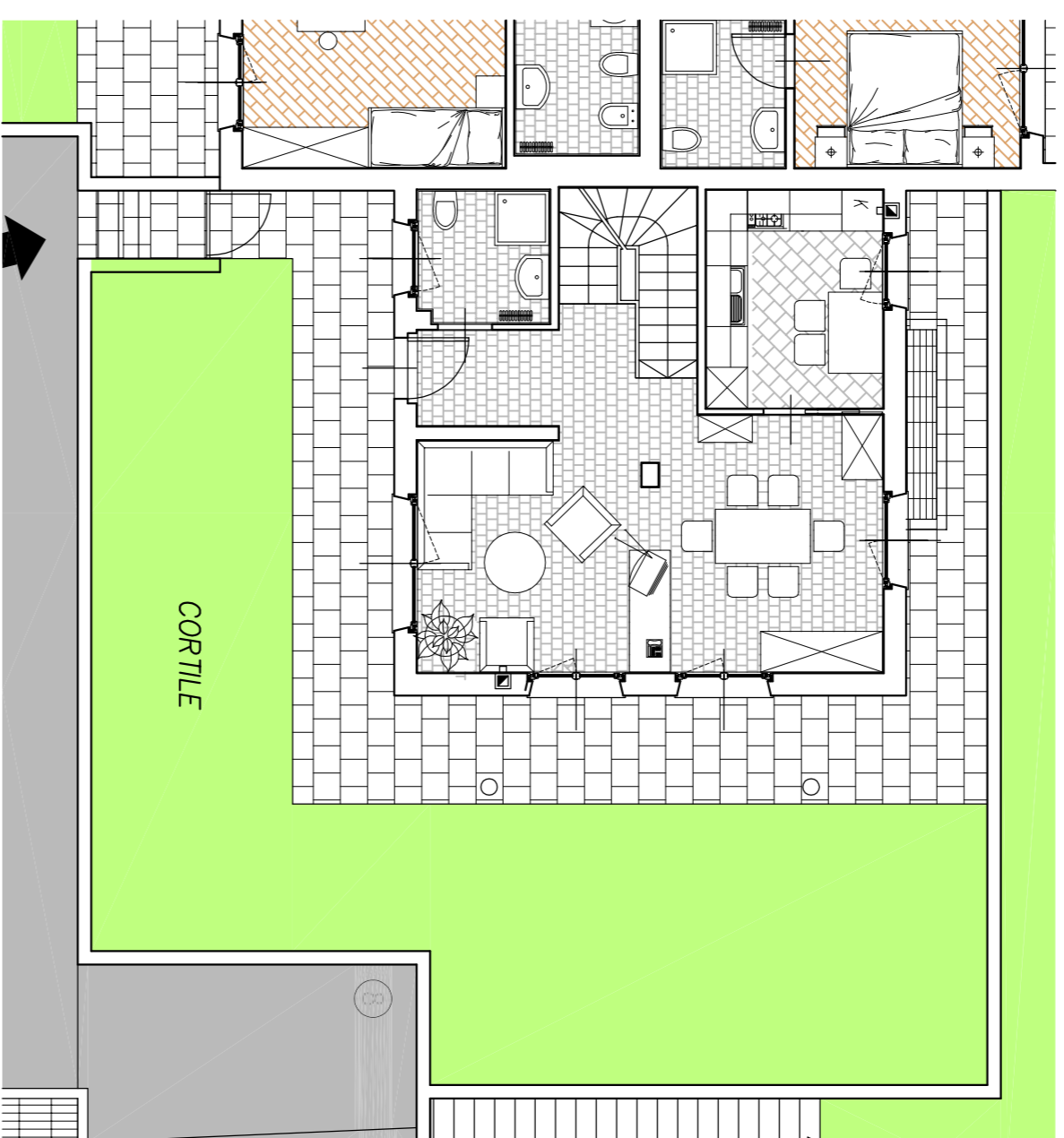
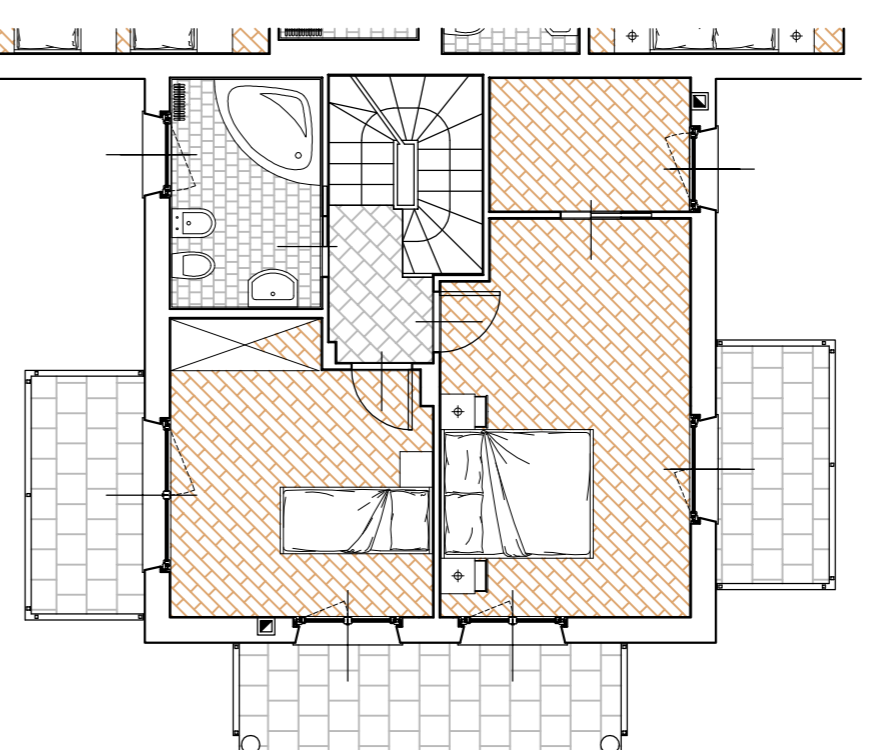


App.to 25 corpo C

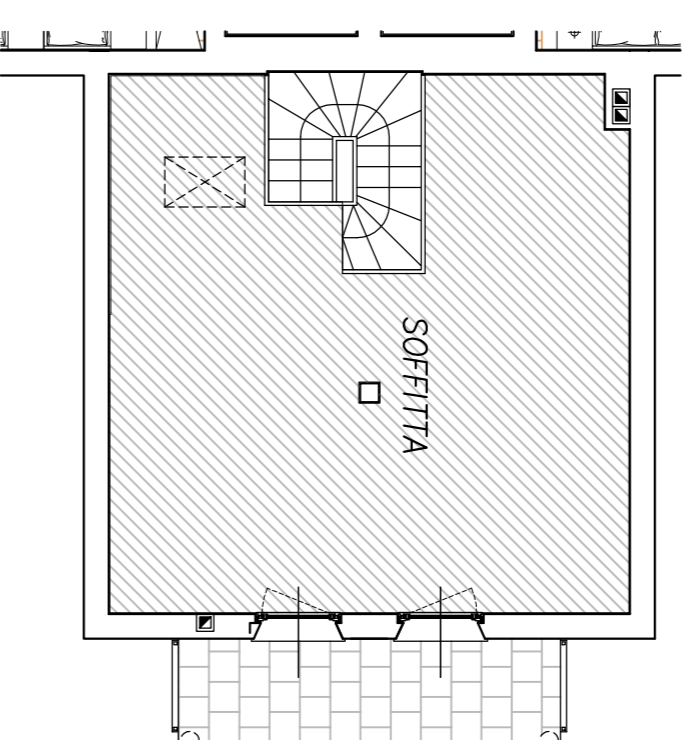
Piano Terra



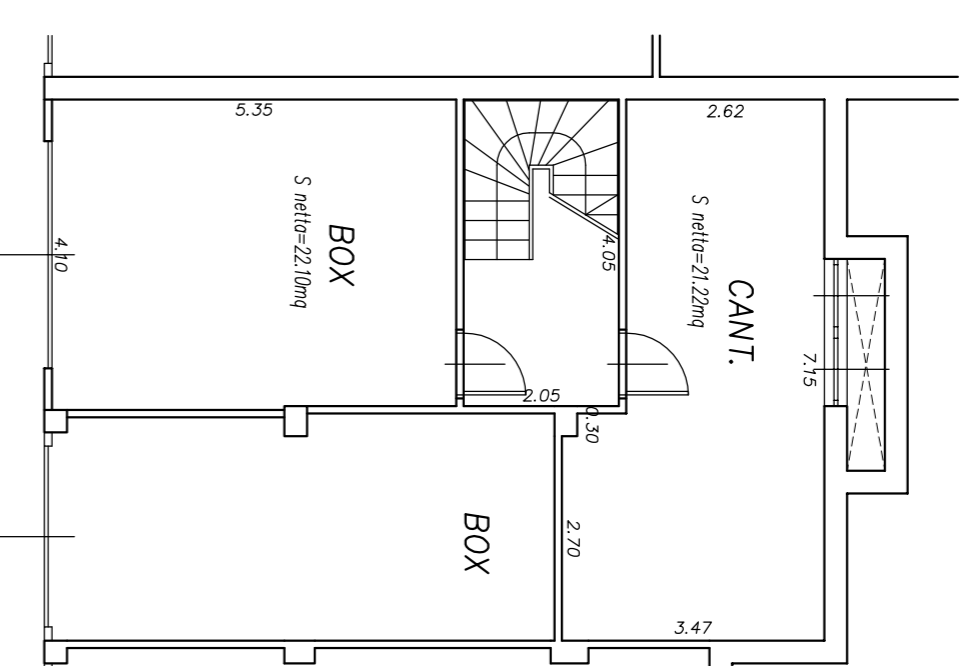
Primo Piano



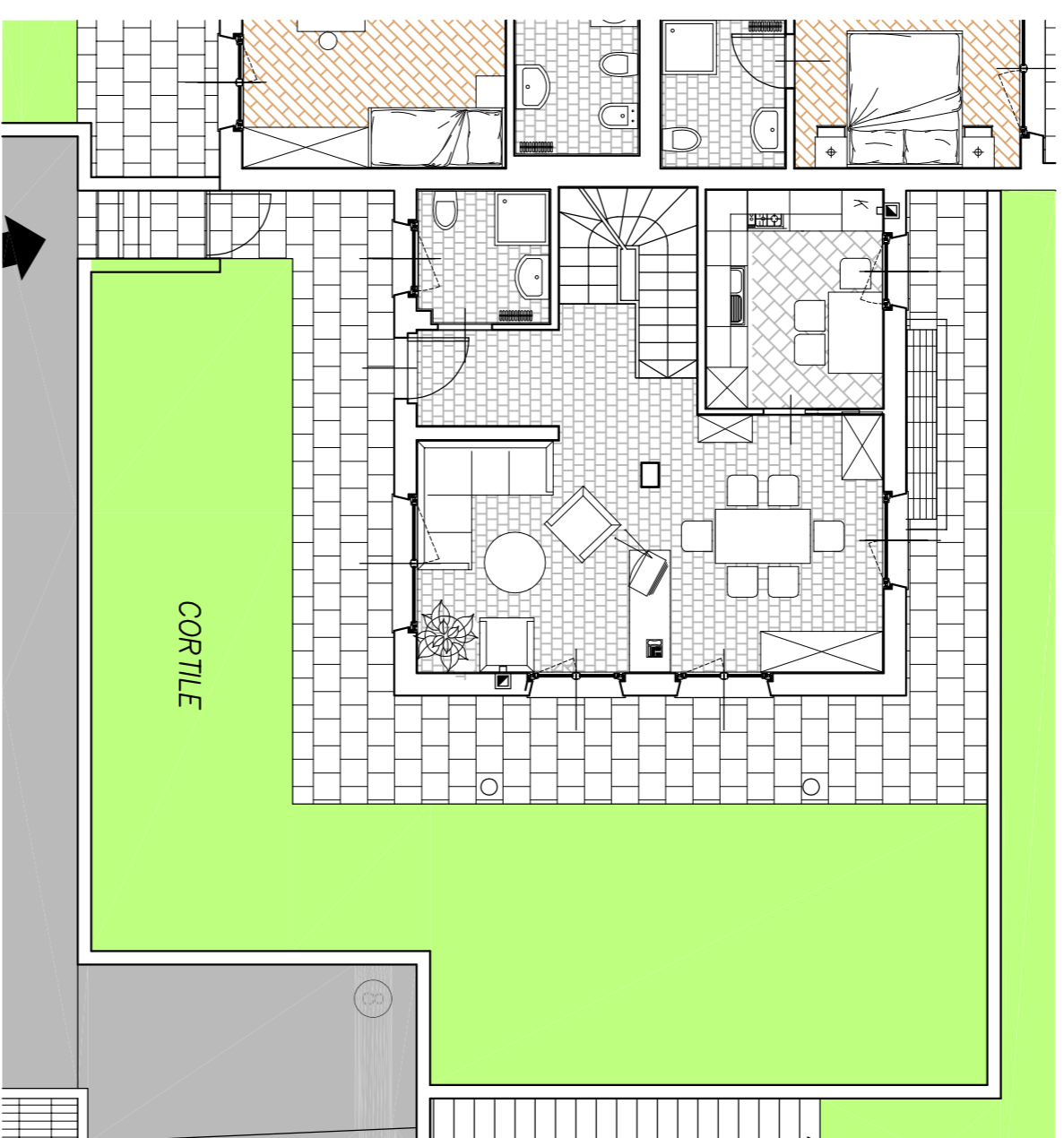
Secondo piano (soffitta)



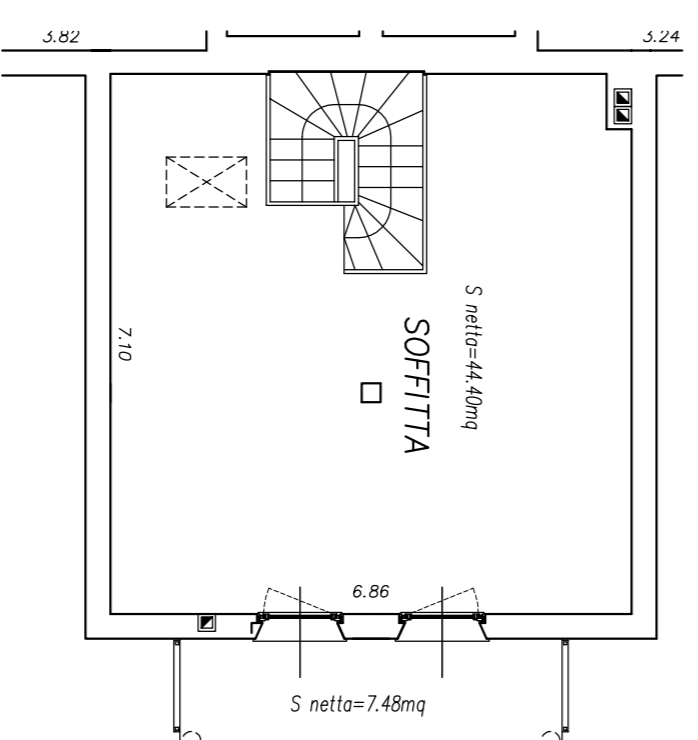
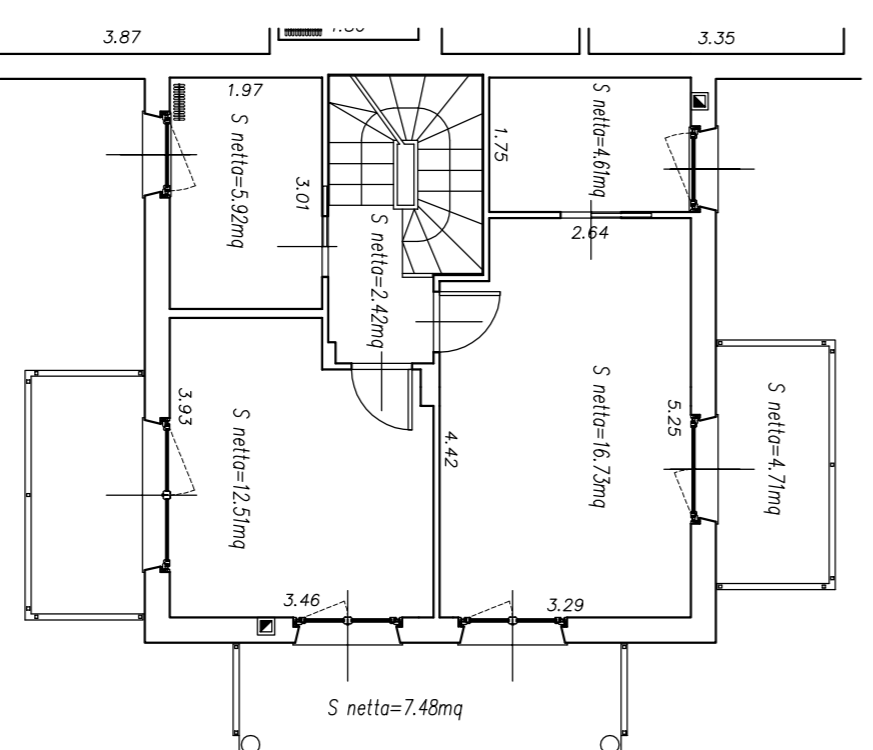
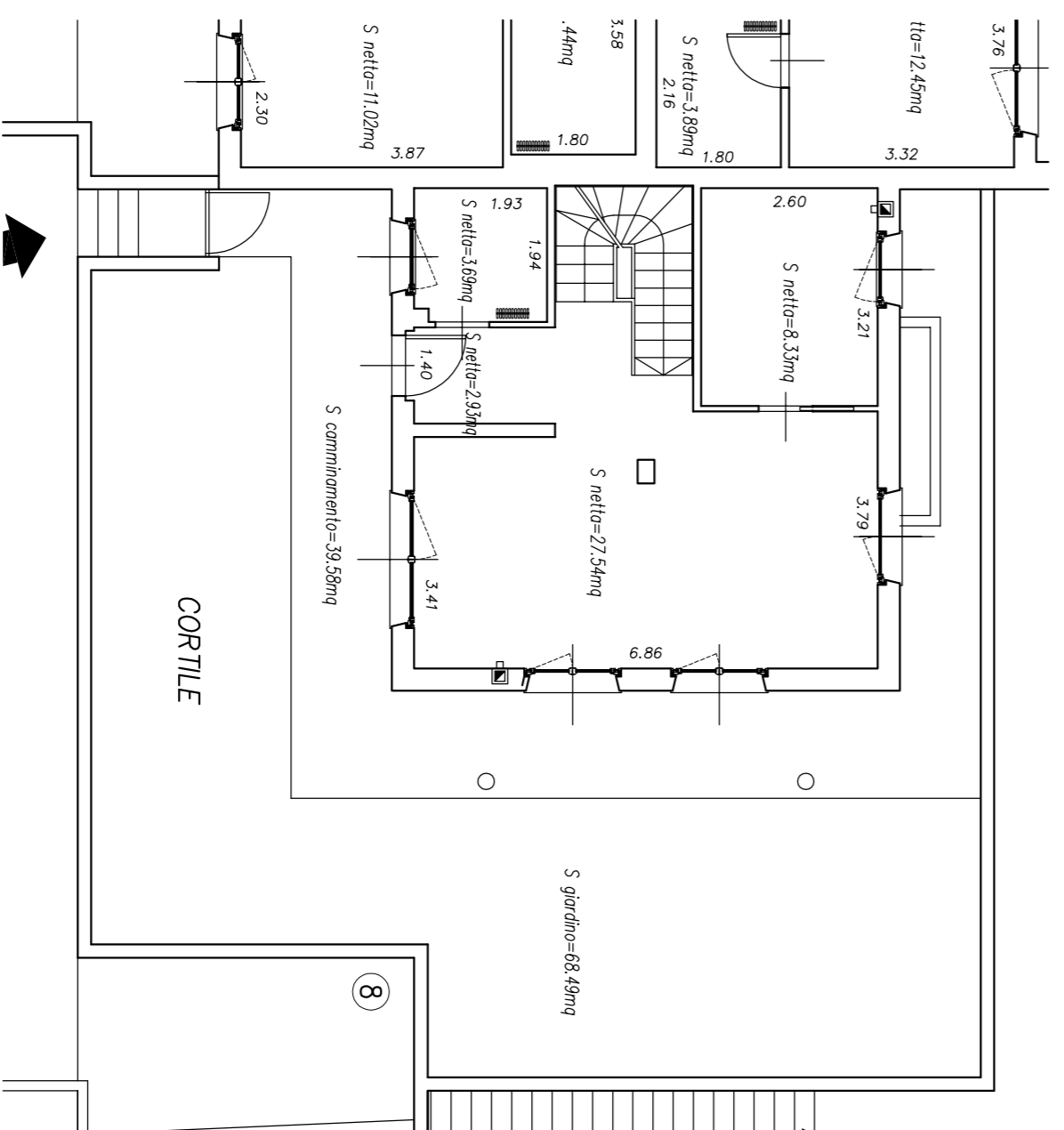
Cantina e garage Piano interrato



Piante arredate



Superfici calpestabili



Le misure sono da ritenersi indicative. Possono variare in fase di realizzazione di tramezze, colonne di scarico e ventilazione, impianti tecnologici e altre motivazioni di carattere tecnico.

RESIDENZA TRE CASTAGNI

Pergine - Via Marconi

certificata CasaClima "A"

App.to 25 - corpo C

30 agosto 2010



SCALA 1:100



C O S M O

COS.MO. COSTRUZIONI S.P.A.
Via Garza 76-38172 Trento
Tel. 0461 832301 - fax 0461 833274
E-mail: info@cosmostruzioni.it

visita il nostro sito

www.cosmocostruzioni.it